



# SYSTEM SOFTWARE **K**



## Print Management Solutions

# SYSTEM SOFTWARE **K**

KIP System K Software Suite provides an enhanced user experience and exceptional productivity for the seamless control of color and black & white print demands. Features include:

- Touchscreen tablet navigation.
- Standardized system icons with tile interface.
- Print submission applications with systems management, configuration and systems status.
- Software applications feature ribbon command bar with extended choice of functions.
- SNMP protocols, cost center control and cloud collaboration.
- System K Windows® Driver, WHQL certified, touch PC compliant with simplified / advanced functions and systems status.

KIP System K Software Suite, uniformly integrated with KIP 70 Series, KIP 940 and the new KIP color systems, will be introduced in Q3 2015.



# A new generation of wide format functionality

Table of Contents

Print Management Solutions

---

**Multi-Touch Touchscreen**

- KIP Multi-Touch Solutions .....4
- KIP Cloud Connect .....6
- KIP Color Copy & Print Plus .....8

**Print Submission**

- KIP PrintPro .....10
- KIP PrintPro.net .....12
- KIP GraphicPro .....14
- KIP Smart Print & Scan .....16

**Print Drivers**

- Windows® Driver .....18
- AutoCAD® Driver .....20

**Accounting / Administrative**

- KIP Accounting Center .....22
- KIP Cost Center .....24
- KIP Card Reader Systems .....26
- KIP Printer Status / SNMP .....28
- KIP Data Security Features .....30

**KIP 720 / KIP 2300 Copy & Scan Applications**

- KIP Advanced Copy & Scan .....32
- KIP Color Pro Copy, Scan & Print .....34

**Print Management Solutions**

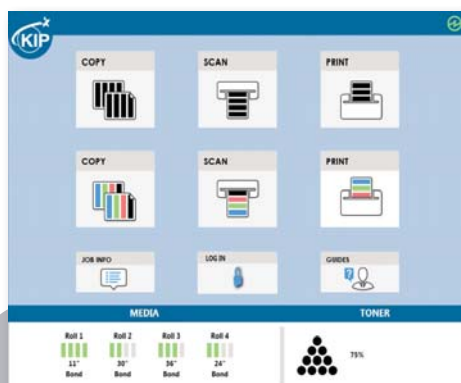
- KIP Touchscreen Technical Interface .....36
- KIP Custom Media Manager .....36

## Multi-Touch Touchscreen

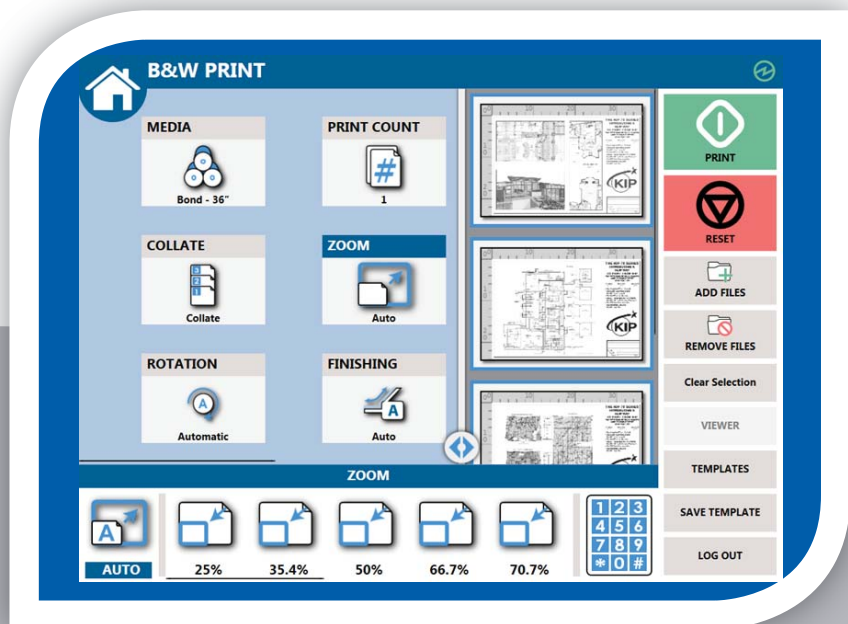
# KIP Multi-Touch Solutions

All system functions for the KIP 70 Series are performed through an integrated, 12" multi-touch tablet-like color display to copy, print and scan both color and B&W documents. Walk-up operator conveniences include auto-start, access to unlimited presets, easy to understand touchscreen user guides and real-time on-screen previews. Multi-touch controls provide users with full color intuitive tablet-like controls with super view, swipe, pinch, spread, rotate and tap.

Vivid image previews and on-screen controls allow for saving and printing the Area of Interest. Multi-touch features allow operators to identify documents, adjust image quality and replace documents in collated sets. The integrated color touch display provides a powerful combination of control plus convenience; you don't have to leave the printer to perform important tasks.



KIP Multi-Touch Home Screen



Zoom, Rotate, and Pan the Image Preview  
Using Multi-Touch Controls



Walk-Up Print, Copy and Scan

## KIP Multi-Touch Touchscreen Features



Vivid 12" Color Multi-Touch Display | Intuitive Feature Selection for Easy Operation | Fully Articulating Viewing Angle | Centralized Access to all System Features | Print, Copy and Scan in B&W and Full Color\* | Super View for Swipe, Pinch, Spread and Rotate | Print Directly from Removable Media, the Cloud and Local Mailboxes | One Touch Access to System Features in 12 Languages | Full Color User Guides | Integrated Print Previews | On-screen Set Copy Editor | Concurrent Print and Scan-to-File | Manage Print and History Queue | Optional KIP Color Plus for Copy and Print in Full Color\* | KIP Accounting Center Integration | KIP Cost Center Integration



### Multi-Touch Features

Super View Image Controls for Print, Copy and Scan | Pinch and Spread to Zoom | Touch to Rotate | Copy, Scan, Email or Print Specific Area of Interest | Selectable User Guides | Automatic Display of User Guide when Replacing Toner/Paper | View Job Queue | Reprint Jobs from History | Pause Copying/Printing to Hand-Feed KIP Folder | View System Status from any Screen



### Copy Functions

Concurrent Copy and Print | Copy Single or Collated Sets | Sort and Replace Pages in Collated Set | Copy Area of Interest | Scan to File while Copying | Scale to Factor or Select Page Size Preset | Select Fold Pattern or Auto-Fold Based on Page Size | Automatic Deskew | Stamp Documents with Text or Graphic | Interrupt Jobs for Urgent Tasks | Unlimited System Presets for Stamps and Folding | Unlimited User Templates for Document Types and Job Settings | Select Front or Rear Stacking | KIP Color Plus for Color Copy to Inkjet or KIP Color\* | Copy Details for KIP Job Accounting and Data Tracking



### Print Functions

Print from Local Mailbox/USB/Network Drive | Print from KIP Cloud Connect | WYSIWYP File Preview | Collated Set Printing | Select Fold Pattern or Auto-Fold Based on Page Size | Scale to Factor or Select Page Size Preset | Auto-Print from Email | Print Details for KIP Job Accounting and Data Tracking | KIP Color Plus for Color Print to Inkjet or KIP Color\*



### Scan Functions

Scan to File in B&W or Color | Scan to Local Mailbox/USB/Network Drive/SMB/FTP | Scan to KIP Cloud Connect | Scan to Email | WYSIWYP File Preview | Scan to Multi-Page TIF, PDF or PDF-A | Scan to B/W TIF, Cals Group 4, PDF or PDF-A | Scan to Color TIF, JPEG, PDF or PDF-A | Select 200 – 600 dpi | Select Rotation | Adjust Scanner Speed for Delicate Originals | Scan Details for KIP Job Accounting and Data Tracking

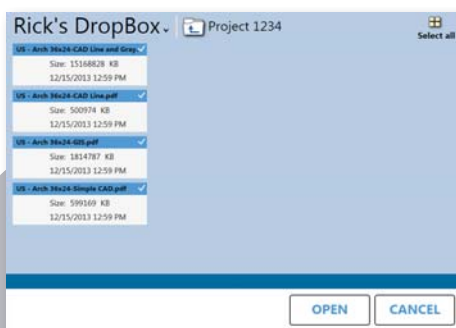
\*Requires Inkjet or KIP Color Printer



## Multi-Touch Touchscreen

# KIP Cloud Connect

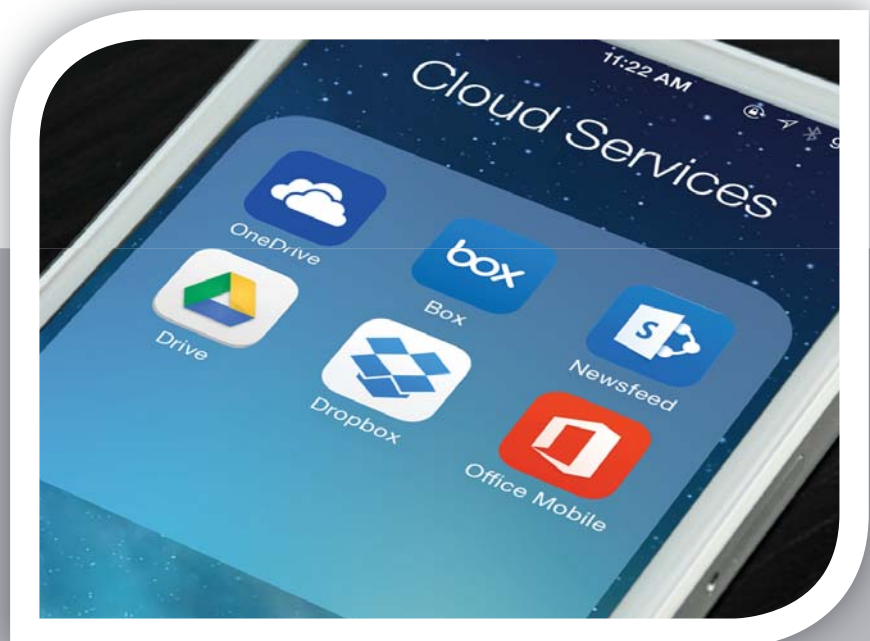
Sharing online content via popular Cloud Services has become a critical collaboration tool. Increased network security and file size restrictions limit the ability of users to Email full size Color and B&W technical documents. The KIP 70 Series Systems include KIP Cloud Connect – the ability to scan to and print from the cloud directly at the multi-touch display. Whether the Cloud Service is used for personal documents or for project collaboration, the KIP 70 Series provides quick access to print color or B&W data. Scan a document to the cloud at the touchscreen and instantly access it at your desktop or mobile device.

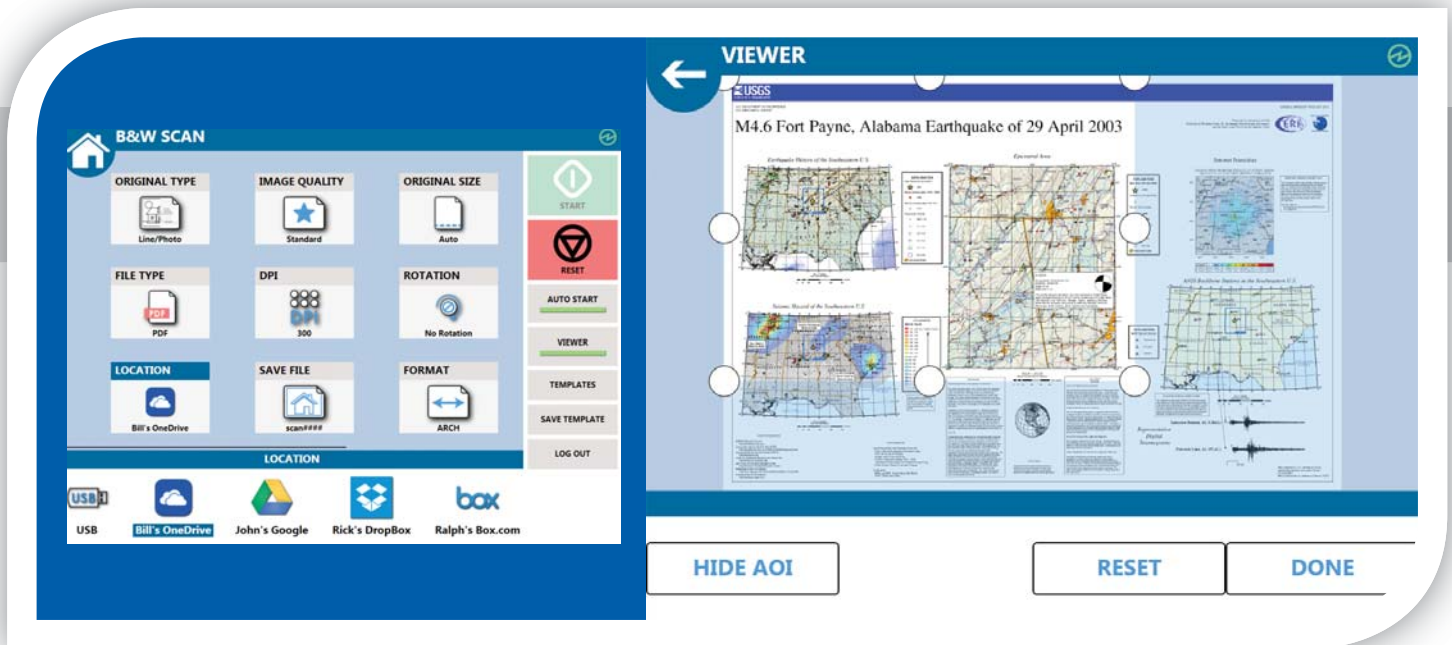


File to Print



Multiple Cloud Locations





Scan to Cloud

Area of Interest to Cloud

## KIP Cloud Connect Key Features



Select from Multiple Cloud Services | Print from KIP Cloud Connect | Scan to KIP Cloud Connect | Unlimited Cloud Connections | Single or Multiple Files | Choose Files from Multiple Cloud Services for Single Print Job | Easy Configuration from Multi-Touch Screen | Collated Sets Printing



### Cloud Service Choices

Microsoft® OneDrive | Microsoft® Office SharePoint | Google Drive | Box.com | Dropbox



### Multi-Touch Print from Cloud

Print to B&W KIP Printers | Print to KIP Color Printers\* | Print to Color Inkjet\* | Print Area of Interest | Build Collated Sets from Multiple Cloud Services



### Multi-Touch Scan to Cloud

Scan to Individual Cloud Location | Scan to Project Cloud Location | Scan Single or Multi-Page Files to Cloud | Scan Color or B&W Documents | Scan Area of Interest



### Image Preview

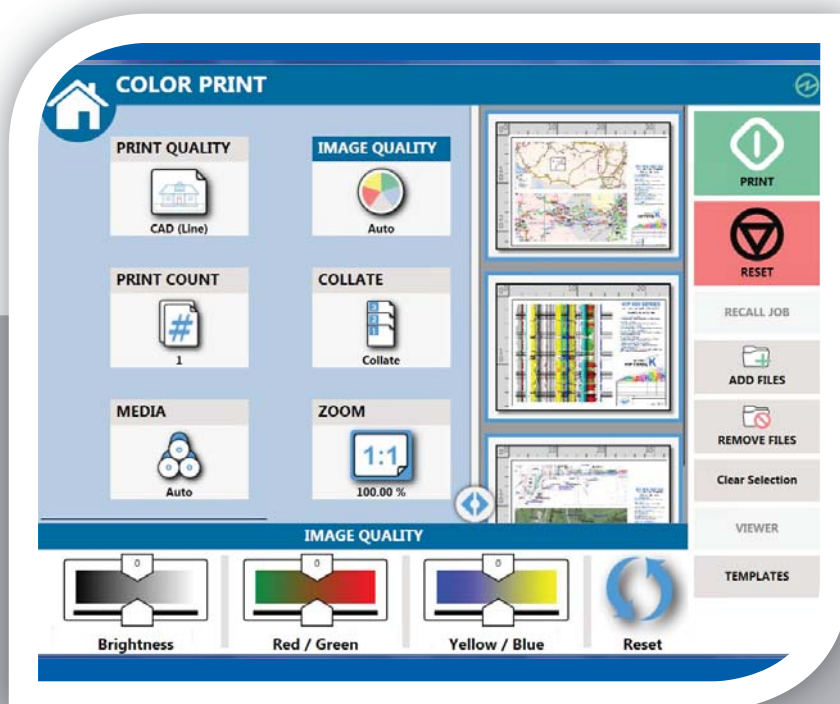
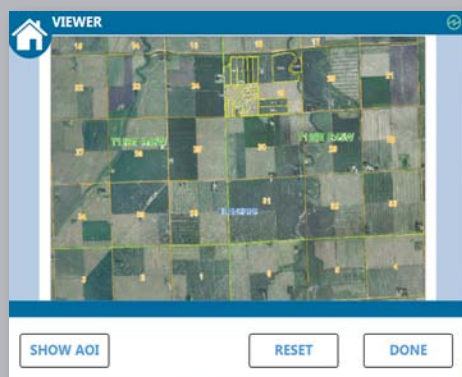
Multi-Touch Controls: Zoom, Rotate and Pan | Zoom to Area of Interest

\*Requires KIP Copy and Print Plus

## Multi-Touch Touchscreen

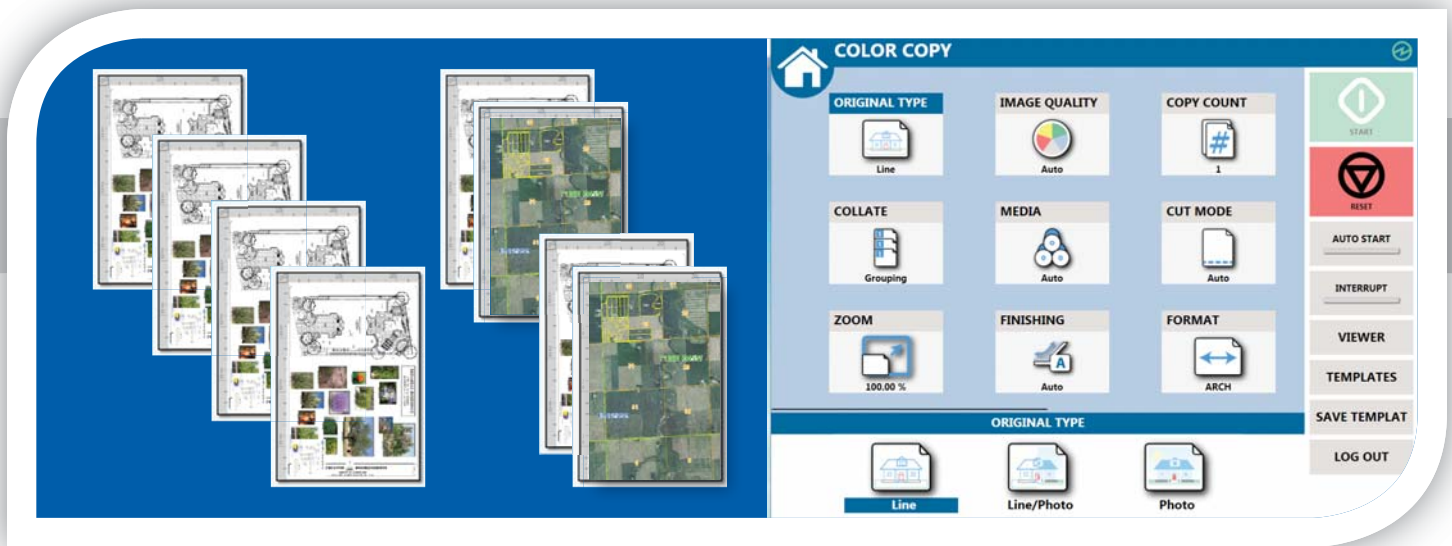
# KIP Color Copy & Print Plus

KIP Color Copy & Print Plus expands the capabilities of the KIP 70 Series System by connecting to up to three networked color printers. Operators can easily preview documents to produce color copies or print digital documents from USB drives, KIP Mailboxes and Cloud locations. Connect the KIP 70 Series System to a wide library of inkjet or KIP Color Systems and the KIP System K controller manages the entire copy and print process. For collated sets or multiple copies, the KIP System K controller processes and transmits data to guest printers while simultaneously continuing the B&W operations.



KIP Color Copy & Print Plus File to Print and Viewer





Copy Single or Collated Sets

KIP Color Copy & Print Plus Color Copy UI

## KIP Color Copy & Print Plus Features



Full Size Color Preview with Super View | Guest Printer Connection via IP Address | Quick Closed Loop Calibration for Accurate Document Reproduction | Simultaneous Operation of Color and B&W Functions | Real-Time Image Preview | Full Screen Color Preview | Advanced Color Image Enhancement | Preview Color Adjustments



### KIP Color Plus - Print Features

Print Single or Collated Sets | Print from Local Mailbox/USB/Network Drive | Print from KIP Cloud Connect | WYSIWYP File Preview | Simple Color Presets for CAD and Graphics Documents



### KIP Color Plus - Color Copy Features

Copy Single or Collated Sets | Scale to Factor or Select Page Size Preset | Unlimited User and System Presets



### Connectivity

Up to 3 Connected Printers | Connect via IP Address



### Super View

Super View Image Controls for Copy/Print/Scan | Pinch and Spread to Zoom | Touch to Rotate | Select Area of Interest for Copy or Print

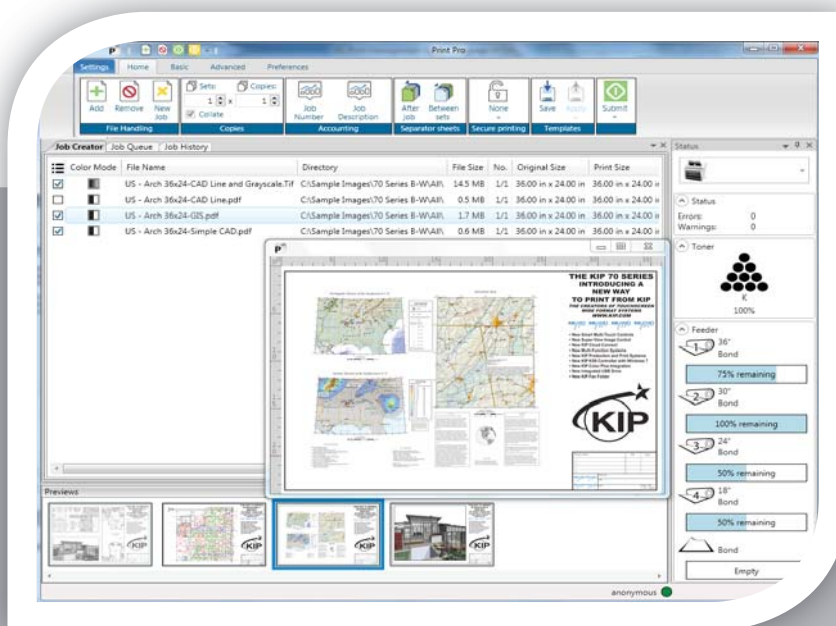
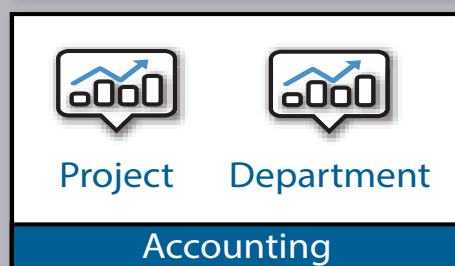
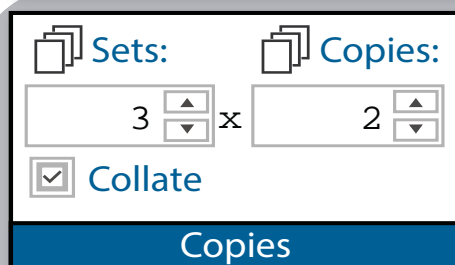
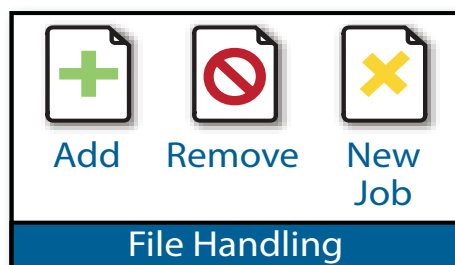
## Print Submission

# KIP PrintPro

Designed for Windows® PC's, KIP PrintPro is an intuitive system management and print submission application for the complete range of KIP Color and B&W Systems.

**Print Submission** - PrintPro is an interactive job building application used to create and manage print jobs from the most common color and B&W wide format digital files including Postscript®, PDF, TIF, JPG, Calcomp, DWF and HPGL 1/2/RTL (and more). Configure single and Multi-Page PDF files with individual scaling preferences, stamps, folding presets, color management controls and print stacking location. Customize the Quick Access Tool Bar with your favorite features or use auto-hide, float or dock to maximize efficiency in the Job Build Matrix. Operators can monitor print progress from start to finish with detailed device status and queue management. Integrated job accounting and data tracking provide user and project activity reports for both color and B&W printing from the KIP Cost Center.

**System Management** - PrintPro allows administrators to create and enable User and System Presets for scaling, stamps, page sizes and print quality. When job notifications are enabled, administrators and job owners are notified as jobs are completed or if intervention is required. Total Print Queue management controls permit adjustments to the print order or to add new files and settings to existing print jobs.



KIP PrintPro Main UI with Files Selected and Large Image Preview

### Preset Setup

**Print Quality Presets**  
Edit Print Quality Presets.

**Scaling Presets**  
Edit Scaling Presets.

**Scan Quality Presets**  
Edit Scan Quality Presets.

**Folding Presets**  
Edit Folding Presets.

**Stamp Presets**  
Edit Stamp Presets.

**HPGL Presets**  
Edit HPGL Presets.

Job Creator | Job Queue | Job History

User Name	Media	Completed	Progress	Status	Date/Time	
Anonymous	0 / 12		Paused	9/12/2014 10:40 AM		
Name	No.	Name	Media	Completed	Progress	Status
US - Arch 36x24-CAD Line and Grayscale.tif	1	Page 1	Bond	0 / 4		Paused
US - Arch 36x24-CAD Line.pdf	1	Page 1	Bond	0 / 0		DoNotPrint
US - Arch 36x24-GIS.pdf	1	Page 1	Bond	0 / 4		Paused
US - Arch 36x24-Simple CAD.pdf	1	Page 1	Bond	0 / 4		Paused
Anonymous	0 / 12		19.9 %	Printing	9/12/2014 10:41 AM	
Name	No.	Name	Media	Completed	Progress	Status
US - Arch 36x24-CAD Line and Grayscale.tif	1	Page 1	Bond	0 / 3	63.2 %	Printing
US - Arch 36x24-CAD Line.pdf	1	Page 1	Bond	0 / 3	16.5 %	Ripping
US - Arch 36x24-GIS.pdf	1	Page 1	Bond	0 / 3		QueuedForRip
US - Arch 36x24-Simple CAD.pdf	1	Page 1	Bond	0 / 3		QueuedForRip

KIP PrintPro System Presets

KIP PrintPro Detailed Print Queue Information

## KIP PrintPro Key Features



Multiple Copies or Collated Sets | WYSIWYP Image Preview | Individual File Settings for Job Matrix Templates | Multi-Page Settings | Color Adjustments and Filter Selections | Email Notification | Customize Job Build Matrix Windows | Document Folding and Stamping | HPGL Pen Preset Selection | Windows® 7/8 and Vista Compatible (32 and 64 Bit) | Customize System and Folder Presets | Manage Print Queue | KIP Secure Print | KIP Accounting Center Integration | KIP Cost Center Integration



### Job Build Matrix

Matrix Printing with Individual Set and Copy Count | Change File Order with Cut/Paste or Drag-n-Drop | Apply Presets to Selected Files or Entire Job | Multi-Page PDF Support | Drag-n-Drop Files or Folders from Cloud, Local, Network Drives and KIP Mailboxes | Banner Page for Set or Job | Submit Job Paused for Hold and Release | KIP Secure Print with PIN or User Identification



### Individual File Settings

Print Quality Presets for Color, Grayscale and B&W Documents | Copy Count, Scaling and Page Size | PDF and Postscript® Quality Preset | Fold Preset | Simple and Advanced Color Management Preset Including ICC Profiles | Manage Image Quality with B&W Point, Background Removal and Sharpening Tools | Select Print Stacking Location | Text and Graphic Stamp in Color or B&W | HPGL Pen Preset | Rotate/Mirror/Invert | Save Unlimited User Templates (All Features Listed Above)



### Feature Management

Connect to KIP Printers | Adjust Job Matrix Column Sizes and Position | Maximize Matrix Area with Auto-Hide, Float or Dock | Enable PS/PDF, HPGL Pens, Print and Scan Quality Presets | Enable Machine, Meter, and Job Notifications



### Image Preview

Preview in Color or B&W | Fast Thumbnail Preview | WYSIWYP Large Image Preview | Rotate Image for Best Fit | Preview Print Direction



### Email Notifications

Job Received | Job Complete | Replenish Toner or Paper | Automated Meter Reads



### Document Folding

Automatic Title Block Detection | Automatic Fold by Page Size | Customize Fold Presets



### Job Monitoring and Device Status

Dependable Device Feedback | View Processing and Printing Status | Manage the Job to Pause, Reorder or Delete | Recall, Edit and Reprint Previous Jobs

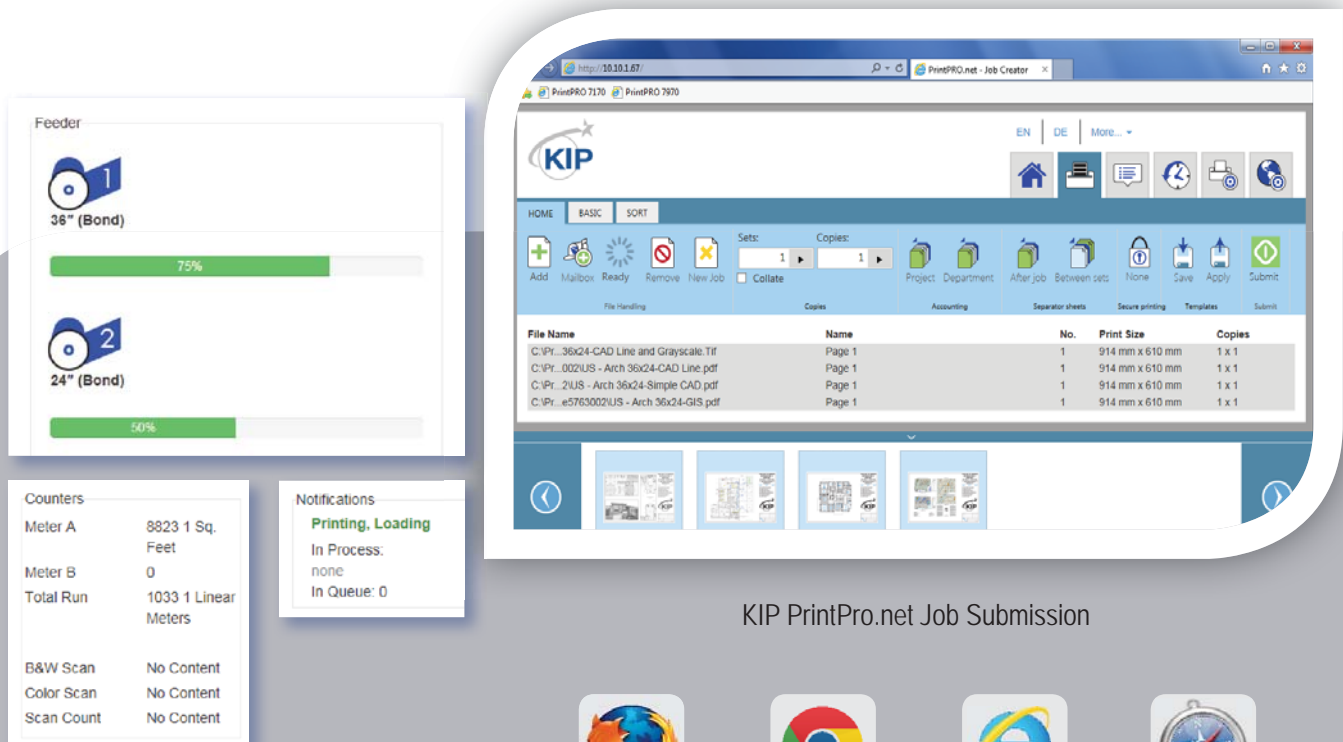
## Print Submission

# KIP PrintPro.net

KIP PrintPro.net provides KIP Color and B&W Systems with the most feature rich browser based print submission and system management application on the market.

**Print Submission** - Without the need to install any application software, operators can perform print submission, access their KIP printer mailbox and manage their own print jobs using many of the same features as Windows® based PrintPro. Using only a web browser, operators can configure single and multi-page files with individual scaling preferences, stamps, folding presets, color management controls and print stacking location. Start new print jobs quickly by accessing User Presets that include operator preferences, job settings and the most common system presets. PrintPro.net supports building print jobs using color and B&W technical documents from standard wide format digital files including Postscript, PDF, TIFF, JPG, Calcomp, DWF and HPGL 1/2/RTL (and more).

**System Management** - Based on defined user access, administrators can use virtually any web browser to continue the print queue and see a full overview of the system operation. Administrators have complete access to printer preferences, network connectivity settings, system presets, daily sleep timers, history queue size, exit tray defaults and auto-rotation settings.



**Feeder**

36" (Bond) 75%

24" (Bond) 50%

**Counters**

Meter A	8823 1 Sq. Feet
Meter B	0
Total Run	1033 1 Linear Meters
B&W Scan	No Content
Color Scan	No Content
Scan Count	No Content

**Notifications**

Printing, Loading

In Process: none

In Queue: 0

**KIP PrintPro.net Job Submission**

EN DE More...

HOME BASIC SORT

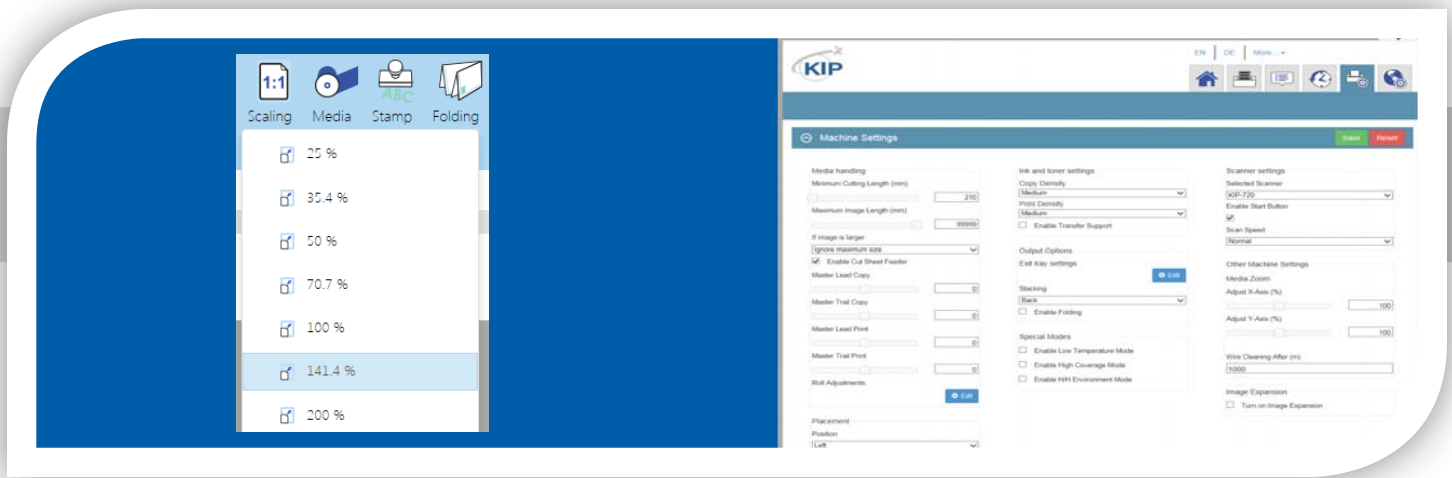
Add Mailbox Ready Remove New Job Collate

File Handling Copies Assembling Separator sheets Secure printing Templates Submit

File Name	Name	No.	Print Size	Copies
C:\Pr...36x24-CAD Line and Grayscale.tif	Page 1	1	914 mm x 610 mm	1 x 1
C:\Pr...002US - Arch 36x24-CAD Line.pdf	Page 1	1	914 mm x 610 mm	1 x 1
C:\Pr...2US - Arch 36x24-Simple CAD.pdf	Page 1	1	914 mm x 610 mm	1 x 1
C:\Pr...e5763002US - Arch 36x24-GIS.pdf	Page 1	1	914 mm x 610 mm	1 x 1

KIP PrintPro.net Settings & Status

Firefox Chrome Edge Safari



KIP PrintPro Scaling

Web-Based, Browser Independent

## KIP PrintPro.net Key Features



Identical Features Across a Variety of Web Browsers | Multiple Copies or Collated Sets | WYSIWYP Image Preview | Individual File Settings for Job Matrix Templates | Multi-Page Support | Color Adjustments and Filter Selections | Email Notification | Document Folding and Stamping | HPGL Pen Preset Selection | Transfer Files from KIP Printer Mailbox | Customize System and Folder Presets | Manage Print Queue and User Settings | KIP Secure Print | KIP Accounting Center Integration | KIP Cost Center Integration



### Web Browser Features

Supports Popular Browsers | Identical Features Regardless of Browser | New Features Available Instantly After System Updates | Use Mobile Phones and Tablets to Manage Settings and Print Queue



### Job Build Matrix

Matrix Printing with Individual Set and Copy Count | Change File Order with Cut/Paste or Drag-n-Drop | Apply System Presets to Selected Files or Entire Job | Multi-Page PDF Support | Select Files or Folders from Cloud, Local, Network Drives and KIP Mailboxes | Banner Page for Set or Job | Submit Job Paused for Hold and Release | KIP Secure Print with PIN or User Identification



### Individual File Settings

Print Quality Presets for Color, Grayscale and B&W Documents | Copy Count, Scaling and Page Size | PDF and Postscript® Quality Preset | Fold Preset | Simple and Advanced Color Management Preset Including ICC Profiles | Manage Image Quality with B&W Point, Background Removal and Sharpening Tools | Select Print Stacking Location | Text and Graphic Stamp in Color or B&W | HPGL Pen Preset | Rotate/Mirror/Invert | Save Unlimited User Templates (All Features Listed Above)



### Image Preview

Preview in Color or B&W | Fast Thumbnail Preview | WYSIWYP Large Image Preview | Rotate Image for Best Fit | Preview Print Direction



### E-Notifications

Email Notifications for: Job Received | Job Complete | Replenish Toner or Paper | Automated Meter Reads



### Document Folding

Automatic Title Block Detection | Automatic Fold by Page Size | Customize Fold Presets



### Job Monitoring and Device Status

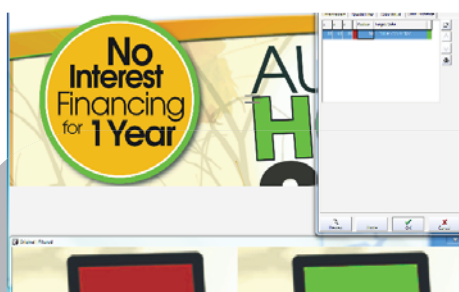
Dependable Device Feedback | View Processing and Printing Status | Manage the Job to Pause, Reorder or Delete | Recall, Edit and Reprint Previous Jobs



## Print Submission

# KIP GraphicPro

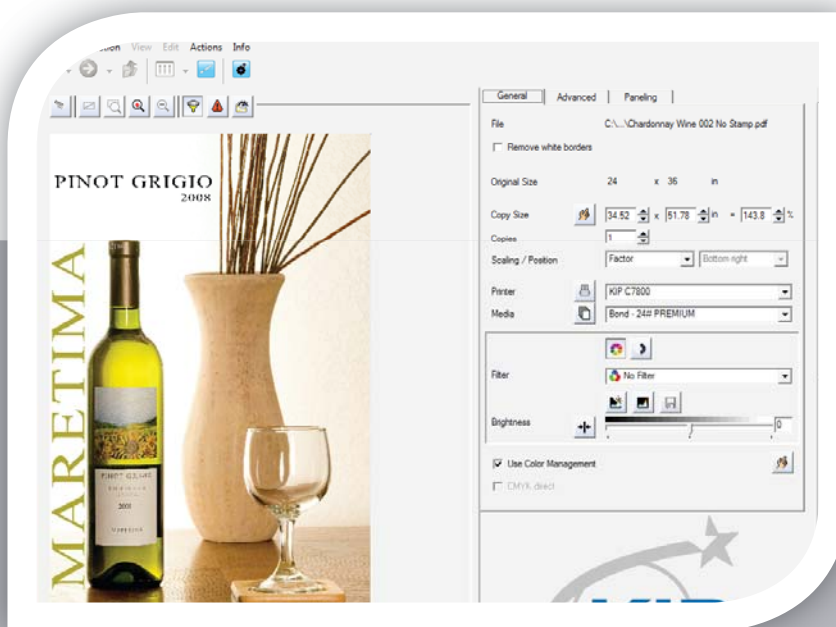
KIP GraphicPro is a full featured RIP for graphic and technical production printing on KIP Color Systems that fully supports graphic and technical production printing. Utilize a single tool to print color posters and mixed sets of technical color and B&W documents to KIP Color Systems. With GraphicPro it's not necessary to be a color expert to print in color. Simple presets for graphic and technical documents provide easy operation yet expand to present sophisticated features. Experts will appreciate the powerful image editing capabilities, dither control, advanced image paneling, nesting for optimum media usage, professional level color management, support for all major file formats and powerful system monitoring.



Professional Color Management



Easy Print Paneling



Explorer Style Interface

## KIP GraphicPro Key Features



Unlimited Workstation Licenses | Scaling by Factor or Page Size | B&W, Grayscale and Color Printing | Job Editor for Mixed B&W and Color Sets | Multi-Page PDF/TIF | Load and Save RIP Presets | Filter Editor for Color Control | ICC Profile Support | Factory / Custom Media Profiles | Nest Single and Multiple Images | Automatic Horizontal and Vertical Paneling | Softproof and Color Gamut Notification | Area of Interest (Zoom to Area and Print) | Technical and Graphic Presets | B&W and Color Editing Tools | Remove White Border | Job Monitor | KIP Accounting Center Integration | KIP Cost Center Integration



### Job Settings

Copy Count | Remove White Border | Scale by Width/Height or Percentage | Scale by Sheet Size / Fit to Sheet | Image Position | Lead and Trail Margins | Automatic or Manual Rotation | Media Type Selection | Invalid Settings Warning



### Color Filter Editor

Save Unlimited Custom Filters | Preview Filter Changes On-The-Fly | Color Adjustment via Lab or CMYK Color Space | Adaptive Black and White Point Settings | Spot Color Exchange | Adaptive Image Sharpening | Saturation/Contrast / Brightness Adjustments



### B&W and Grayscale Filter Editor

Grayscale and B&W Image Adjustments | Image Despeckle | Hole Fill | Deskew



### Job Editor

Individual File/Page Settings | Mix B&W and Color Documents | Choose Printer Media Type by Document | Separate Multi-Page Documents | Individual Page and Set Count | Save /Load / Recall Job | Image Pre-flight



### Media Setup

Factory Media Profiles | Printer Configuration Wizard | Media Calibration Wizard | Spectrophotometer Support | Gray Calibration



### Image Preflight and Editing Tools

Color Softproof | Remove White Border | Crop | Despeckle | Deskew | Add Text | Erase | Change File Resolution | Area of Interest | Save as File Format | Nesting of Multiple Copies and Files | Automated Paneling by Width/Count | Panel by Custom Width/Height | Rotate Panels



### Job Monitor

View all Jobs Processing | Review Job Processing Errors | Pause/Cancel Jobs | Fast Reprint of Previous Jobs



### Color & B&W File Format Support

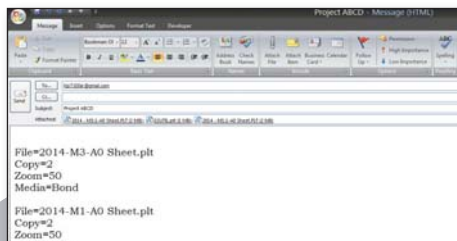
PDF | Postscript/EPS | JPG and JPG 2000 | Color & Grayscale TIFF | HPGL1 /2, HP-RTL | DWF | PNG | BMP | GIF | B&W TIFF (Group 3 & 4) | B&W Cals Group 4

## Print Submission

# KIP Smart Print & Scan

KIP Smart Print & Smart Scan are flexible approaches to delivering print and scan services – one that responds to mobile business needs by providing a driverless cloud solution. Whether you're using an iPhone, PC, Mac or laptop; KIP Smart Print simplifies convenience printing using your favorite Email provider. Scan to Email an entire document or just a small area using KIP Smart Scan.

Configure any KIP system to receive Emails and their attachments at predetermined intervals. The attached documents are printed using keywords for copy count, scaling and KIP Secure PIN. Alternatively, archive the documents and access them from the multi-touch screen, KIP PrintPro or PrintPro.net. KIP Smart Scan & Smart Print let operators make a "copy" from one KIP to another anywhere in the world with only an Email address.



Optional Keywords for  
Expanded Flexibility



Easy to Use Email Printing



SMARTPHONE



TABLET



LAPTOP



MAC/LINUX



PC

Use any Phone, Tablet, Laptop or PC



## KIP Smart Print & Scan Key Features



Use any Phone, Tablet, Laptop or PC | No Need to Install Drivers or Software Applications | Submit Print Ready Files via Email Attachments | Works with any Web Enabled KIP Printer | Print B&W or Color Documents | Scan Full Size Documents | Choose an Area of Interest | Remote Scan Auto-Archived or Printed by KIP Printer | Access Archived Documents via KIP Apps | Optional Keywords Provide Expanded Flexibility



### KIP Smart Print

Works with any Web Enabled KIP Print System | Print Color or B&W Documents | Secure PIN From Smart Print via Email | SSL for Encrypted Connection | POP3 Or IMAP Mail Compatible | Configurable Email Monitor | Archive or Print Incoming Email | Attach Multiple Files To Create Sets | Keywords for Filename, Copy Count, Media Type, Scaling, KIP Secure PIN



### KIP Smart Scan

Works with any Web Enabled KIP Print System | Scan to Email In Color or B&W | Scan Area of Interest to Email | Cloud Scan to Remote KIP Systems via Web | Remote Scan Auto-Printed | Remote Scan Auto-Archived

## Print Drivers

# Windows® Driver

The KIP Windows® Driver Pro is Microsoft® WHQL certified, meeting exact standards of reliability and quality. The functional and intuitive graphic user interface and expanded features provides the user with a wide range of standard and special functions when printing from Windows® based applications.

The KIP Windows® Driver Pro can be used with the entire range of KIP Printers from any Windows® based application for both color and B&W print applications.

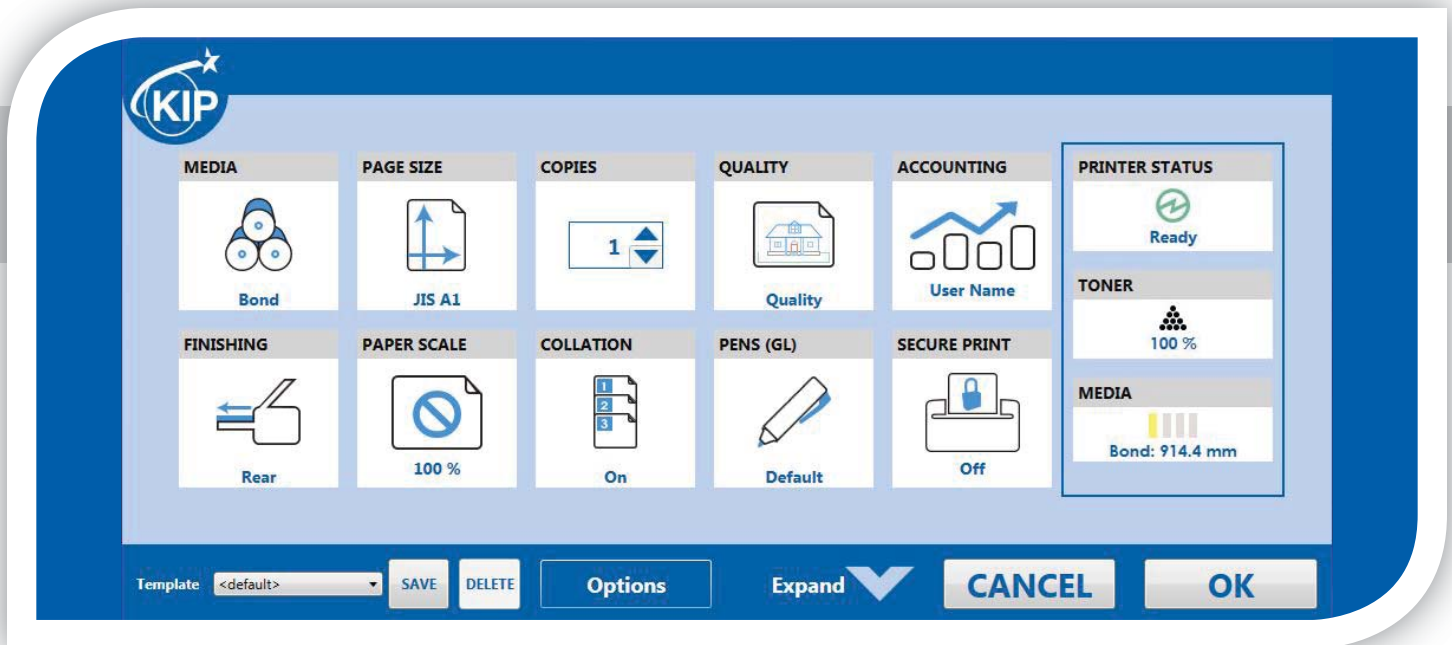


Windows® Driver Expanded View



Microsoft® Windows Compatibility





Windows® Driver Collapsed View

## KIP Windows® Driver Key Features



Fast Spooling for Multiple Copies or Sets | Displays Real-Time System Status | Information Set Collation | Provides Current Media Information | Media Selection | Secure PIN Printing | Send Job on Hold | Save Templates | Brightness Adjustment | Unlimited Image Quality Presets | Pen Preset Selection | KIP Accounting Center Integration | KIP Cost Center Integration



### Driver Information

64 and 32 Bit Operating System Compatibility | KIP GL Format (CAD Applications) | KIP Script Format (Graphics Applications) | Windows® 7/8, Vista, XP 32 Bit Compatible | Windows® 7/8, Vista, XP 64 Bit Compatible



### Media Information

Paper Size (Standard and Custom Sizes) | Standard Media Types | Custom Media Types | Orientation | Media Source



### Print and Output

Scaling (When Not Available In Application) | Paper Scaling | Collation/Page Order | Mirroring | Inverting



### Color Selections

Simple Color Preset Selection | Simple Color Adjustments | Advance Color Quality Selection | Advance Color Filter Selection | Advance Color, Black Trapping On/Off | Advance Color, Color Trapping On/Off



### Special Features

Apply Stamps | Set Separator | Job Separator | Folding Control (when folder is present) | Trim at Image | Alignment



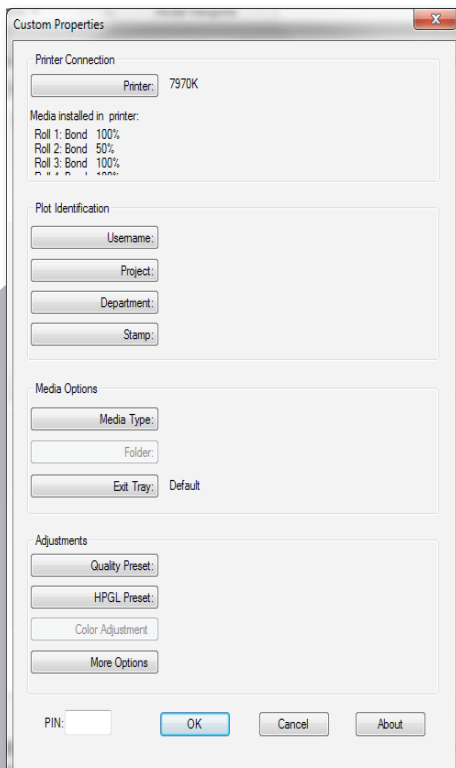
### KIP Accounting

KIP Cost Center Integration | KIP Accounting Center Application

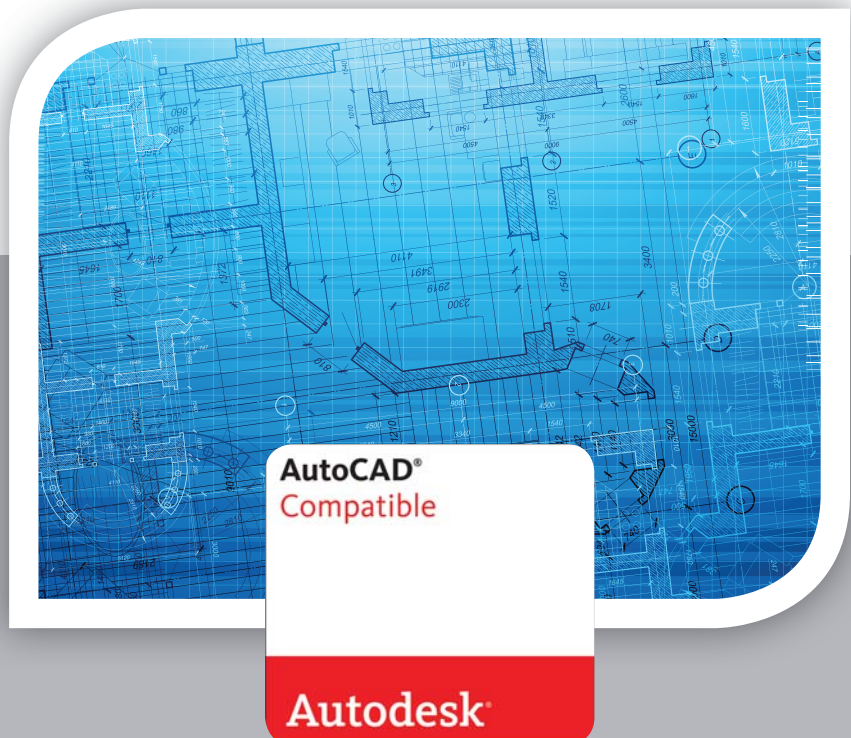
## Print Drivers

# AutoCAD® Driver

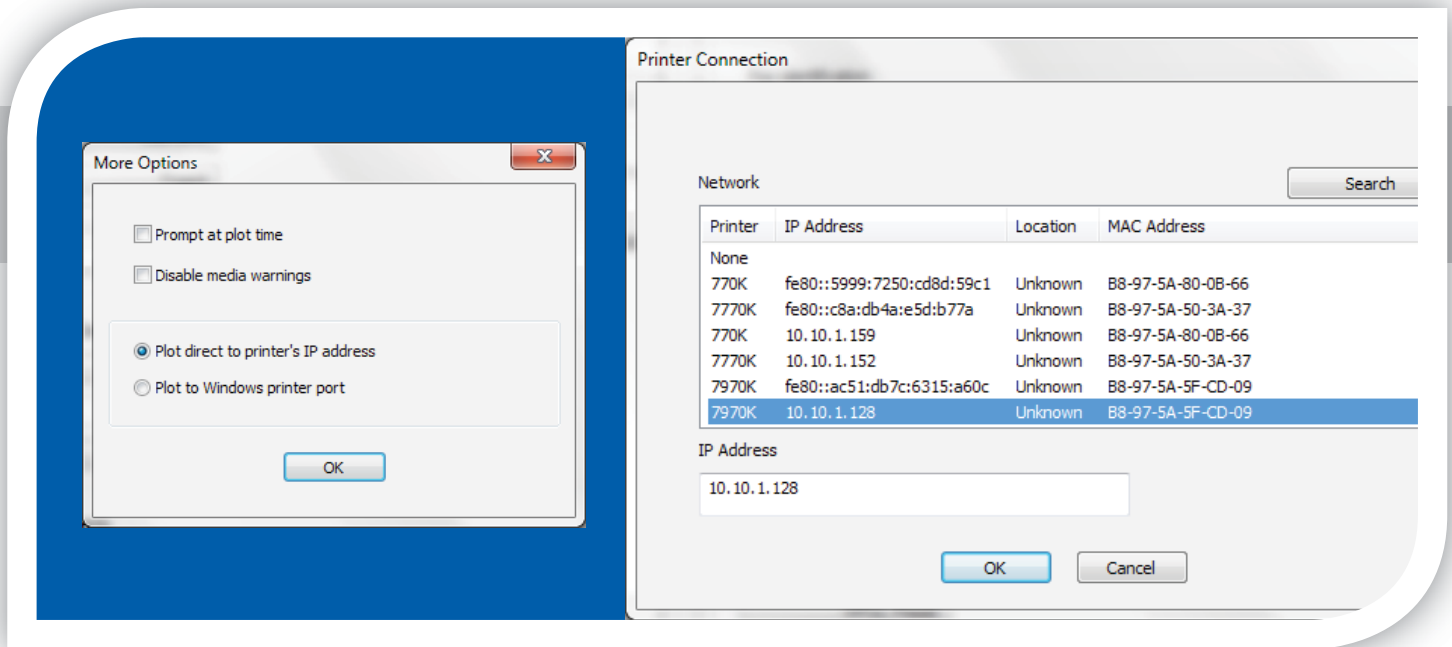
The KIP certified AutoCAD® Driver provides integrated printing from within Autodesk® software applications such as AutoCAD®, AutoCAD® LT and DWG TrueView. The fully compatible, dedicated KIP HDI Driver uses the Autodesk® backbone to streamline printing of AutoCAD® files. KIP's AutoCAD® Driver includes unique data tracking by username and two customizable fields. Two-way printer status allows users to review roll and media information. Long length documents are easily generated by the KIP HDI Driver and the HPGL/2 data is transmitted to KIP's System K controller for quick processing and printing.



AutoCAD® Driver Custom Properties



Fully Compatible with AutoCAD® 2010 and Newer



AutoCAD® Driver More Options

AutoCAD® Driver Printer Connection

## KIP AutoCAD® Driver Key Features



Fully Compatible with Current Versions of AutoCAD® | True HDI AutoCAD® Driver | 32 and 64 Bit Operating System Compatibility | Real-Time Media Status | Custom Media Size Configuration | Media Saving by Auto Rotation | Advanced Color Mode Image Type Selection | Dither Pattern Control for B&W Lines vs Aerial | KIP Accounting Center Integration | KIP Cost Center Integration



### Supported Versions

AutoCAD® 2010 and Newer Supported | 32 & 64 Bit Operating System Compatibility



### Media Information

Real-Time Media Size and Quantity | Custom Page Size Configuration | Media Saving Auto Rotation | Include Pen and Media Information in File | Automatic Roll Selection



### Color Controls

Simple Color Adjustments | Simple Color Image Type Selection | Apply Color Filter | Color and Black Trapping Controls



### B&W Image Controls

Vector Graphics Dither | Vector Line Dither Mode | Raster Graphic Photo Mode | Line Width Compensation | Raster Image Gamma and Density Controls



### Special Features

HPGL Pen User Preset Selection | Select Fold Pattern | Select Exit Tray Location | Select Text and/or Graphic Stamp | Dedicated AutoCAD® HDI Driver | HPGL/2 – RTL File Data | KIP Secure Print | Job Accounting - User Tracking | Job Accounting – Two Customizable Fields

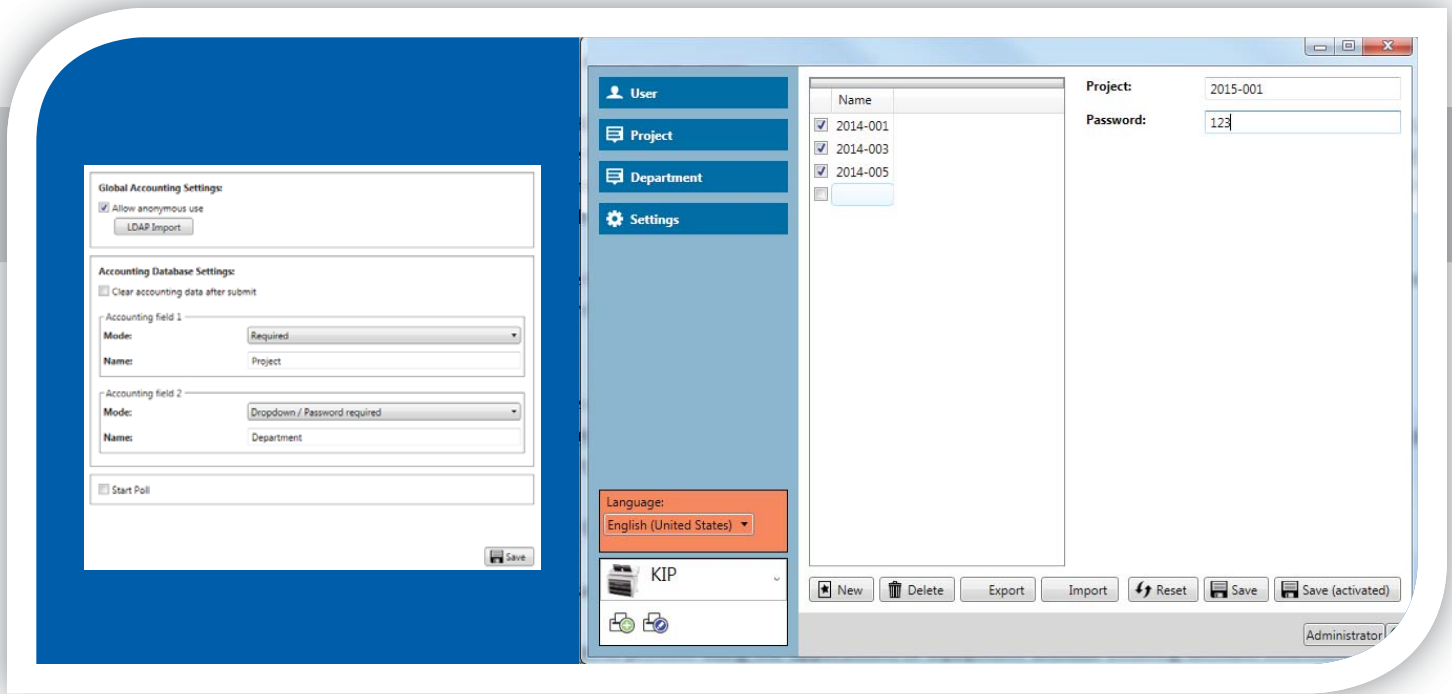
## Accounting / Administrative

# KIP Accounting Center

The KIP Accounting Center consolidates control of user account data and printing rules for all Copy, Print and Scan activities for KIP Color and B&W Systems. When activated, the KIP Touchscreen systems, printing applications and print drivers continuously retrieve accounting and user data from the System K controller. Utilizing rules based printing and account data, administrators and IT managers can control print costs or turn printing into billing revenue. The account data is held on the KIP Printer system for use by the KIP Cost Center software application.



Integrated with all KIP Applications



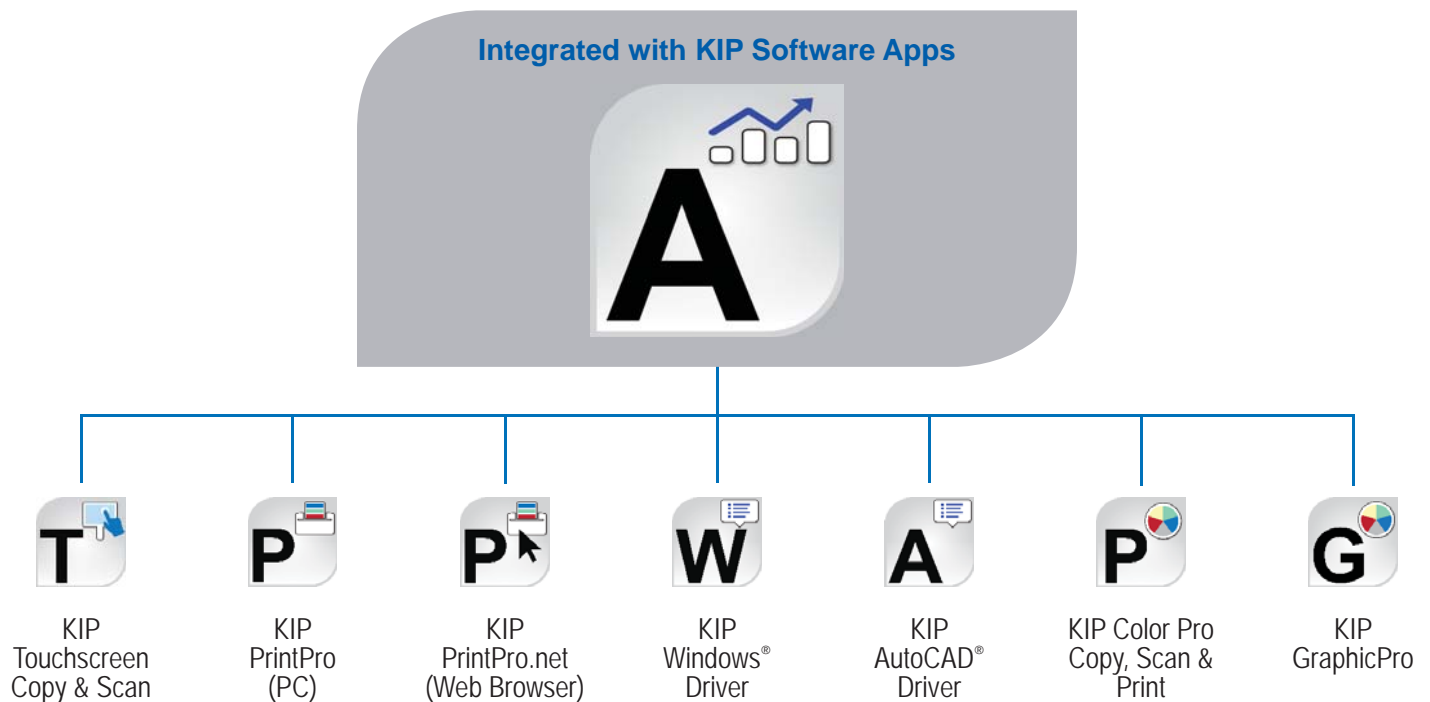
KIP Accounting Center Settings

Adding Version Numbers

## KIP Accounting Center Features



Username and Two Customizable Fields | Import for User Data Using LDAP | Clear Fields After Each Job Submission | ASCII Import/Export | Easily Update User, Project and Department Data | Automated KIP System Update via Scripting | Password Protect any or all Data Entries | No Special Data Servers Required





## Accounting / Administrative

# KIP Cost Center

The KIP Cost Center application retrieves extensive log files directly from KIP Systems and automatically generates production reports for user, project and department level accounting data. Print or Email visually attractive graphical reports for color and B&W print and scan production directly from the application. Generate reports anytime and anywhere when KIP Systems are configured to automatically Email tracking data at pre-determined intervals.

**KIP Cost Center CONFIG**

General | Email | Coverage | Costing Entry | Manual Entry

770K Costs		7170K Costs	
	BW		BW
Case Toner Cost	185.00	Case Toner Cost	245.00
Service per Sq. Unit	0.030	Service per Sq. Unit	0.025

7770K Costs		7970K Costs	
	BW		BW
Case Toner Cost	430.00	Case Toner Cost	545.00
Service per Sq. Unit	0.020	Service per Sq. Unit	0.015

Scanning Costs

	BW	Color
"Cost per Sq Unit"	0.030	0.050

Cost Entry for Printing and Scanning

**KIP Cost Center**

File Tools About

Print Email Reset

Define Summary Coverage Media Users Projects Departments Recent Projects Print Mode Scan Mode

**Production Summary: Print**

Total Number of Prints	B&W	Color	Total
	28	0	28

Total Printed Units	B&W Sq.ft.	Color Sq.ft.	Total Sq.ft.
	12.74	0.00	12.74

Toner Cartridges Consumed (Estimated)	Yellow	Cyan	Magenta	Black
	0.00	0.00	0.00	0.00

Average Coverage %	B&W	Color
	1.10 %	0.00 %

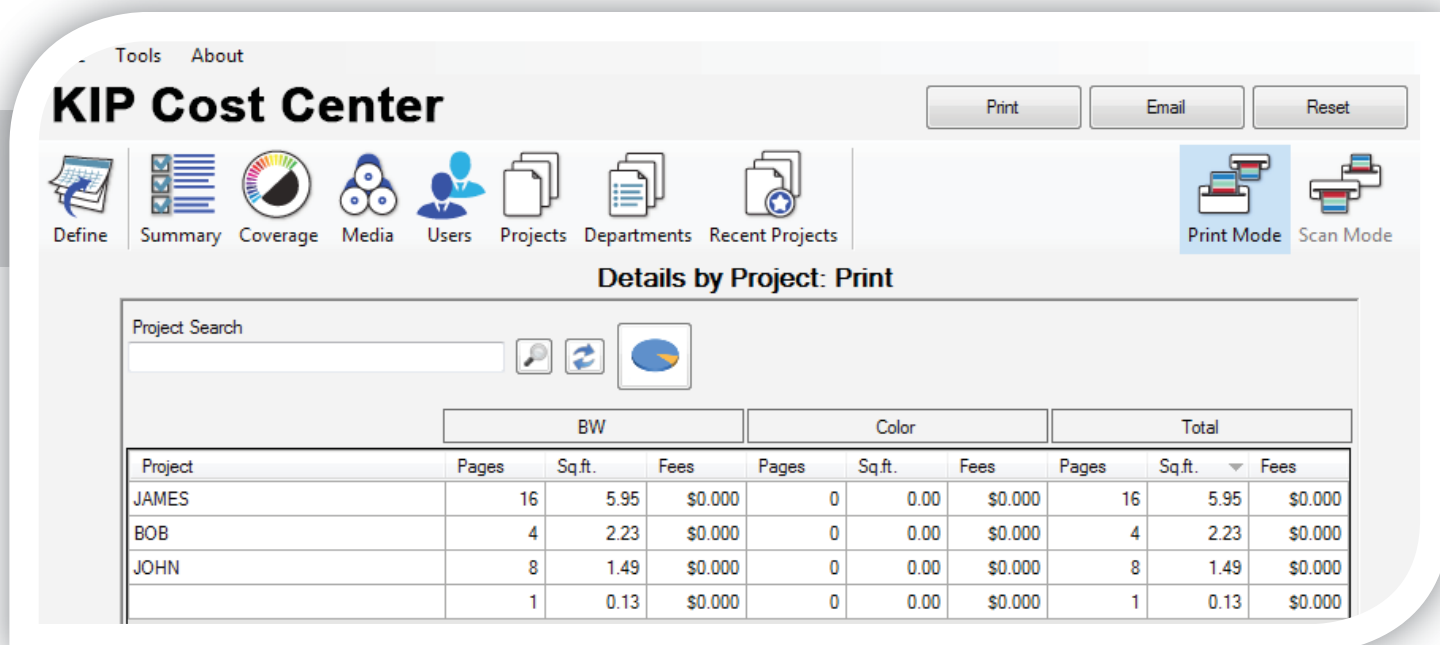
  

Toner and Service Fees	Toner	Service	Total
BW	\$0.03	\$0.00	\$0.03
Color	\$0.00	\$0.00	\$0.00
Total	\$0.03	\$0.00	\$0.03

Counter A	A Units	Counter B	B Units
7308	Sq. Feet	0	Linear Feet

Print Summary Reports



KIP Cost Center Print Details by Project

## KIP Cost Center Features



Integrated with all KIP Apps and Touchscreen Systems | Track Color and B&W Copy, Scan and Print | Easy to Understand Graphical Reports | Average Toner Coverage by Percent | Daily Print and Scan Volume for Color and B&W | Reports by Date Range | Print Reports on Demand | Receive Reports by Email | User, Project and Department Categories | Access the Details of the Last 100 Jobs | KIP Toner Costs by Color and B&W | KIP Maintenance Costs | KIP Scanner Costs by Color and B&W



### Report Categories

Print Coverage Tracked in 10 Categories | Reports Available in Data and Graphic Format | Print Reports on Demand | Receive Reports via Email | User Report – Graph for Top 5 | Project Number Report – Graph for Top 5 | Department Report – Graph for Top 5 | Search Function



### Reports by Date Range

Print Volume – Total Number and Total Sq. Ft. / Sq. M. | Scan Volume – Total Number and Total Sq. Ft. / Sq. M. | Toner Costs | Maintenance Costs | Total Cost of Operation | Estimated Toner Cartridges Used (CMYK) | Average Toner Coverage % by Color and B&W Usage



### Graphic Reports

Daily Print and Scan Volume Line Chart | Color vs. B&W Scanning Bar or Pie Chart | Average % Coverage Report | Toner and Service Fees Generated | Total Number of Prints by Media Type | Total Sq. Ft. / Sq. M. by Media Type



### Job History

Last 100 Jobs Information | Detailed Toner Coverage Per Page | Print Volume – Total Number of Prints | Print Volume – Total Sq. Ft. / Sq. M. | Maintenance Costs | Toner Costs by Color and B&W

## Accounting / Administrative

# KIP Card Reader Systems

### Contactless Card Reader and DoD Compliant Common Access Card (CAC)

KIP offers customers two solutions to secure the KIP Systems using contactless card readers.

The KIP Contactless Card system integration enables control of walk-up copy, print and scan functions for work group systems with standard FeliCa Cards. With the touch of a card, unlock the touchscreen and recall User Preferences automatically. Track usage information for copy, print and scan functions based on Card ID. Walk away with your card and the system automatically resets for the next user.

The KIP Common Access Card Solution is a DoD authorized solution that uses a contactless card and in-line network appliance to access network resources. KIP's CAC Solution protects a network by requiring users to authenticate using a smartcard (CAC/PIV) and personal identification number (PIN). Without both the card and PIN, the KIP CAC does not permit the user to transmit scan data from the KIP device to network resources.



Contactless Card System



Common Access Card Solution

## KIP Contactless Card System Integration Key Features



Standard FeliCa Cards | Various Contactless Cards | User Authentication Linked to Card | Load User and System Presets | Load User Cloud and SMB Credentials | Track Usage by Card/NFC Token | Release User Jobs at Touchscreen | KIP Accounting Center Integration | KIP Cost Center Integration

### Connectivity

USB to KIP System K Controller

### Administration

KIP Accounting Center Application for User Data | KIP PrintPro.net for Feature Settings

### Supported Standards

Japan: No AC-12005 | USA: FCC ID AK8RCS380 | Canada: IC Certification No: 409B-RCS380 | Europe: CE R&TTE (1999/5/EC)

## KIP Common Access Card Solution Key Features



Enables/Disables Network Access | Designed for Easy Installation | Meets Homeland Security Presidential Directive (HSPD-12) | Local and Network User Authentication Using LDAP or Active Directory | Netgard MFD In-Line Network Appliance

### Connectivity

2x 10/100 Ethernet | Dual IPv4 and IPv6 Stacks

### Administration/Management

Local: Manager Remote | Web: Browser via SSL

### Supported Standards

ISO/IEC 7816 and 7810 | FIPS 140-2 and 201 | US (Dept of Defense) Common Access Card (CAC)

### Physical Description & Operating Environment

10 Button PIN Pad | In-Line Netgard MFD Appliance | Size: 6.25 in. x 1.125 in. x 6.25 in. (15.9 cm x 2.5 cm x 15.9 cm) | Weight: 0.9 lb. (0.4 kg) | Power: Operating 100-240 V, 50/60 Hz Auto-Sensing Power Supply Input | Power Consumption: 0.6A | Temperature: 32°F – 122°F (0°C – 50°C)

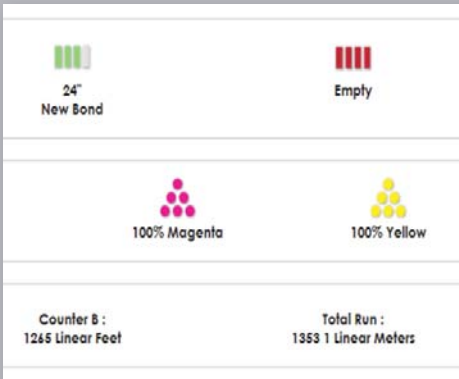
## Administrative

# KIP Printer Status / SNMP

The KIP Printer Status application is the ideal solution for providing centralized status updates and information to administrators and users over a local or Wide Area Network. The app provides immediate access to view and manage the current status of all B&W and Color KIP Systems on the network via a single, convenient user interface. Using standard SNMP protocol, the KIP Printer Status application will automatically detect the available KIP printers and provide valuable information such as media levels, toner status and meter readings.

### KIP Printer E-Notifications

In conjunction with the KIP Printer Status application, each KIP is capable of sending detailed E-Notifications. Users receive Email confirmations that their job has reached the print queue and has completed printing; ready for pickup. If a system interruption occurs such as out of toner or paper, a detailed Email will immediately notify personnel. The System K controller automates the meter reading process by transmitting meter data via Email on a weekly or monthly basis. The KIP Cost Center software can interpret the meter information and provide reports for print and scan production for both color and B&W documents.



24" New Bond

Empty

100% Magenta

100% Yellow

Counter B : 1265 Linear Feet

Total Run : 1353 1 Linear Meters

### Configuration

**General Options**

- ☒ AutoDiscover on Start
- ☒ Only Display IPv4 Printers
- ☒ Use Wake-on-LAN (WoL)

**Media Display Units:**

- ☒ Imperial
- ☐ Metric

**Refresh Interval:**  Minutes

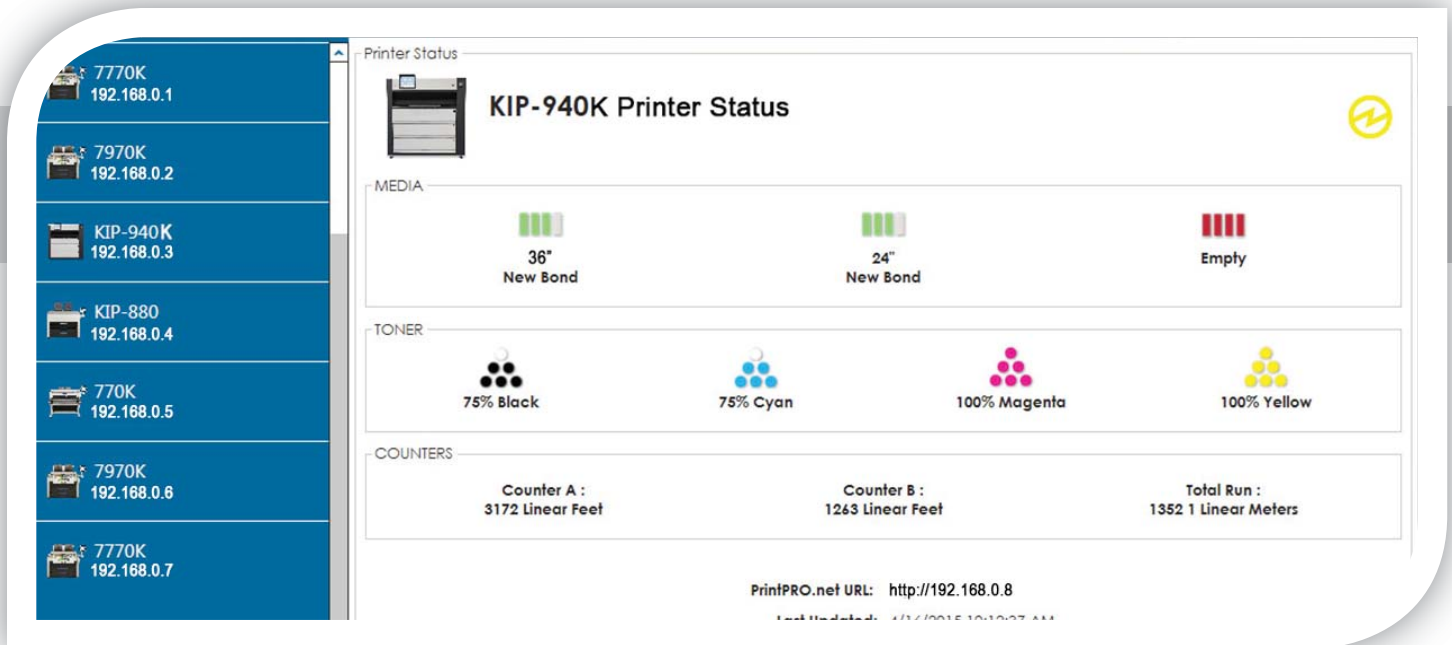
**Define Additional Printers**

IP Address:	Printer Name:	Reset
192.168.0.1	-none-	✗
192.168.0.2	-none-	✗
192.168.0.3	-none-	✗
192.168.0.4	-none-	✗
192.168.0.5	-none-	✗
	-none-	✗
	-none-	✗
	-none-	✗
	-none-	✗
	-none-	✗

KIP Printer Status Configuration

Visual Notification for Machine Status





KIP Printer Status Printer Details

## KIP Printer Status / SNMP Key Features



SNMP Communication to KIP Printer | PC Based Windows® 7/8 Application | 32 and 64 Bit Operating Systems | Monitor Status of KIP Printers | Auto Detect KIP Printer (LAN) | Add up to 10 Printers by IP Address (LAN or WAN) | Visual Notification for Machine Status | View all KIP Printers on a Single Screen | Quick Access to Print Queue via PrintPro.net Link | Automated Meter Read



### Machine Status

Blinking Attention Indicator | Online or Offline | Open Covers | Mis-Feeds | Current Print Meter



### Printer Notifications by Email

Job Received | Job Complete | Printer Out of Toner | Printer Mis-Feed | Printer Out of Paper | Job Requires Attention | Set Date and Time for Automated Meter Read | Meter Data for Use with KIP Cost Center



### Meter Information

Counter A – Square Feet / Meters | Counter B – Linear Feet / Meters | Total Run – Lifetime Meter Count | B&W and Color Meter Count

## Accounting / Administrative

# KIP Data Security Features

At KIP, security is paramount. As a world leader in the development of digital wide format production technology, KIP is committed to keeping digital information safe and secure. Customers and potential customers can look to KIP as a trusted provider of secure solutions with many standard and optional security features.

Based on Department of Defense NISPOM specifications, the Image Overwrite security feature electronically shreds information stored on the hard disk as part of routine job processing.

Job Accounting and Data Tracking ensures that only properly authorized users are permitted to use a KIP device. Two additional fields, displayed in each KIP application can enforce tracking by Project or Department Number. These standard features feed the KIP Cost Center to generate production reports based on User, Project or Department usage.

Eliminate the risk of unauthorized access with the optional Removable Hard Disk Drive kit. The removable hard drive can be disconnected when the device is unattended. Multiple disk drives can be implemented allowing secure device sharing between different workgroups or departments. This option is frequently required by the US Government for management of classified information and highly recommended for commercial customers who print data that is subject to legal regulations including HIPAA, SOX and PCI.

The System K controller is designed and constructed to utilize standard open architecture PC components. KIP printing speeds and unique image processes are supported by the Windows® Embedded System 7 (WSE7) embedded operating system. The Microsoft® partnership with KIP ensures an industry standard that provides excellent reliability.





## KIP Data Security Key Features



Image Overwrite | Removable Hard Disk Drive Accessory Kit | System K Operating System Windows® Embedded System 7 | Standard Security Updates | Data Encryption and Virus Scanning Applications | KIP Secure Print | KIP Accounting Center Integration | KIP Cost Center Integration



### Image Overwrite

Electronically Shreds Copy, Print and Scan Data | Standard Feature | Automatic Deletion | 3 – Pass Erasure Algorithm | Configured via Printpro.net | Based on NISPOM 5220.22-M Requirements



### Removable Hard Disk Drive Kit

Share KIP Device between Secure Workgroups and Departments | Remove External Hard Disk Drive as Required | Additional Disk Drives Available | Management of Classified or Legally Restricted Data | Separate Usage for Confidential and Non-Confidential Work



### Job Accounting and Data Tracking

Access Control | User Authentication | Project Number Authentication | Scan/Print Authentication at Touchscreen | Scan/Print Authentication in KIP Software Apps | KIP Accounting Center Integration | KIP Cost Center Integration



### Windows® Operating System

Microsoft® Windows Embedded Partner | Accepted by IT Managers | Start Up and Shut Down Quickly | Improved Memory Utilization | Accepts Automatic Updates | Configure Microsoft® Management Console to Update via WSUS



### Data Encryption and Virus Scanning

Data Encryption via SSL and IP Security (IPSec) | Major Brands Tested | Accepts Virus Definition Updates



### KIP Secure Print

Confidential Printing | Unique 4 Digit Security PIN | Jobs Print when Released by User | Reduce Waste – No Uncollected Jobs | Standard Feature in all KIP Software Apps | Secure PIN from Smart Print via Email

## KIP 720 / KIP 2300 Copy & Scan Applications

# KIP Advanced Copy & Scan

KIP has the right solution for either workgroup and dual footprint Copy and Scan Applications. The versatile, integrated scanners of the KIP 70 Series Touchscreen Systems are excellent for small to medium size workgroups. The KIP 720 and KIP 2300 scanners are designed for stand-alone production copy and scan. Combined with the KIP Color Advanced Scan software, designed for use with a PC workstation, the KIP 720 and KIP 2300 scanners include color and B&W scan-to-file. As requirements for production copy and scan increase, KIP has two upgrade paths based on production requirements. Upgrade to economical copy and scan for simple Color Copy or choose KIP Color Pro for full featured color and B&W copy, scan and print.

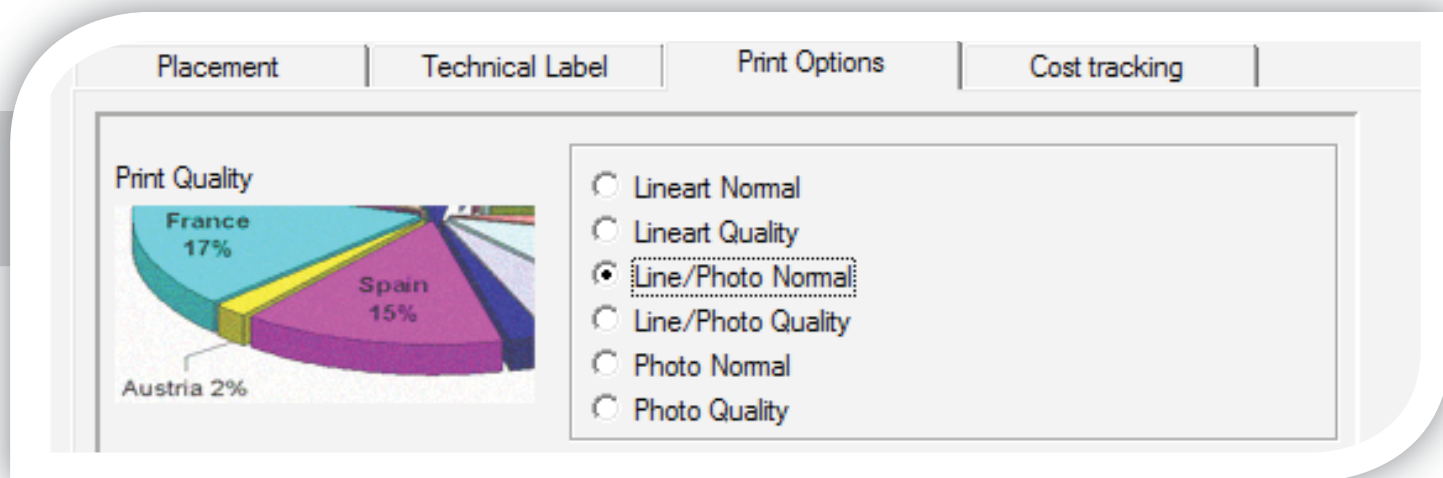
KIP Color Advanced Copy and Scan features simple scan-to-file controls, basic collated sets copying and printing to KIP Color and Inkjet Systems with easy to use Color Management Tools. Color Advanced is keycode upgradable to KIP Color Pro to provide even more copy, scan and print features including a full image editor, extensive on-the-fly image quality adjustments, collated sets copying, digital file printing and connectivity to additional inkjet printers.



KIP Color Advanced Scan



KIP Color Advanced Copy & Scan



KIP Advanced Copy & Print Quality

## KIP Advanced Copy & Scan Key Features



B&W and Color Scan to File / Scan to Email | B&W and Color Copy to KIP Systems | B&W and Color Copy to One Inkjet | File to Print to KIP or Inkjet | Simple Filter Editor and Image Preview | Closed Loop Calibration



### Color Advanced Scan-to-File / Scan-to-Email

Auto-Detect Original Size | Wide Variety of Formats | B&W, Grayscale and Color Scanning | Scan to Multi-Page PDF and TIF | Set Image Compress | Auto-Increment File Name | Auto-Image Deskew | Auto-Start for Fast Document Feeding | Simple Grade Filter Editor and Preview




### Color Advanced Copy

Copy to KIP B&W and KIP Color Systems | Includes Copy Connection for up to 99 KIP and 1 Inkjet | Concurrent Copy and Print | B&W, Grayscale and Color Adjustments | Printer / Scanner Closed Loop Calibration with Color Systems | Save Unlimited Presets



### Color Advanced File-to-Print

Includes Print Drivers for up to 99 KIP and 1 Inkjet | Print Single Technical and Graphic Files | B&W, Grayscale and Color Adjustments | Paneling for Oversize Printing | Step and Repeat (Nesting)

KIP Color Advanced Scan	KIP Color Advanced Copy and Scan	
<b>Standard Color and B&amp;W Scan-to-File</b> <ul style="list-style-type: none"> <li>Included with KIP Scanner</li> <li>Scan to File</li> <li>Scan to Email</li> </ul>	<b>Economical Color and B&amp;W Copy and Scan-to-File</b> <ul style="list-style-type: none"> <li>Scan to File</li> <li>Scan to Email</li> <li>Copy to KIP</li> <li>Copy to 1 Inkjet</li> <li>Limited Image Quality Filters</li> <li>Limited Print Quality Filters</li> </ul>	 <p><b>KIP Color Pro Copy and Scan</b></p>
UPGRADE	UPGRADE	FULL FEATURED

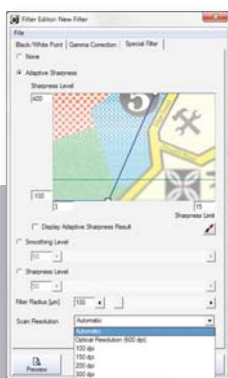


## KIP 720 / KIP 2300 Copy & Scan Applications

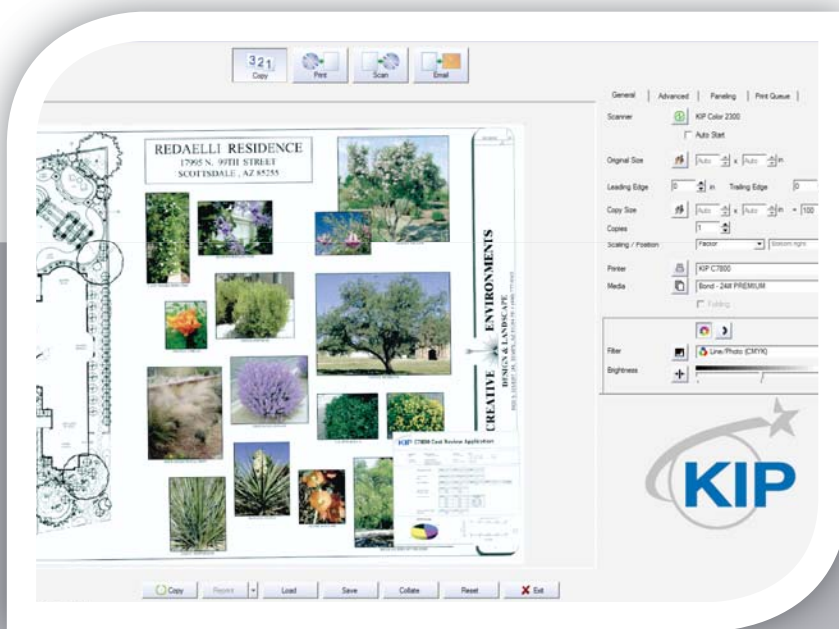
# KIP Color Pro Copy, Scan & Print

KIP Color Pro is a professional wide format Copy, Print and Scan Software providing a complete suite of features for high resolution color and B&W copying, scan-to-file and RIP applications. Upgradable by keycode from KIP Color Advanced and for use with the KIP 720 and KIP 2300 scanners, this PC based software is designed to provide comprehensive copy, print and scan features including copying to KIP B&W and KIP Color Systems and popular inkjet printers.

KIP Color Pro provides extensive copy, print and scan features including a full image editor, color and B&W image quality adjustments, collated sets copying, digital file printing and connectivity to additional inkjet printers. Use the filter editor to preview documents and make on-the-fly adjustments to the black point and white point settings to quickly snap text to solid black and clean up background during the scanning or copying process. Deskew documents automatically or use the image editor to two-point deskew and crop the document during or after scanning. The full featured job editor includes forward and reverse collation to combine digital files with scanned documents to create mixed sets of color and B&W documents.



Color Filter for Scan/Copy Resolution and Speed Adjustment



KIP Color Pro Copy, Scan & Print User Interface



Spot Color Adjustment

## KIP Color Pro Copy, Scan & Print Key Features



B&W and Color Scan to File / Scan to Email | B&W and Color Copy to KIP Systems | B&W and Color Copy to Two Inkjets | File to Print to KIP or Inkjet | Professional Grade Filter Editor and Image Preview | Closed Loop Calibration | Full Image Editor | Job Editor for Mixed B&W and Color | KIP Accounting Center Integration | KIP Cost Center Integration



### Color Pro Scan-to-File / Scan-to-Email

Includes all KIP Color Advanced Features | Auto-Detect Original Size | Wide Variety of Formats | B&W, Grayscale and Color Scanning | Scan to Multi-Page PDF and TIF | Set Image Compression | Auto-Increment File Name | Auto-Image Deskew | Auto-Start for Fast Document Feeding | Professional Grade Filter Editor and Preview | Full Image Editor





### Color Pro Copy

Includes all KIP Color Advanced Features | Copy to KIP B&W and KIP Color Systems | Includes Copy Connection for up to 99 KIP and 2 Inkjet Printers (HP / Canon / Epson) | Concurrent Copy and Print | B&W, Grayscale and Color Adjustments | Printer / Scanner Closed Loop Calibration with Color Systems | Save Unlimited Presets



### Color Pro File-to-Print

Includes all KIP Color Advanced Features | Includes Print Drivers for up to 99 KIP and 2 Inkjet Printers (HP / Canon / Epson) | Print Single Technical and Graphic Files | B&W, Grayscale and Color Adjustments | Paneling for Oversize Printing | Step and Repeat (Nesting)

 <p><b>KIP Color Advanced Scan</b></p>	<p>UPGRADE</p>  <p><b>KIP Color Advanced Copy &amp; Scan</b></p>	<p><b>KIP Color Pro Copy and Scan</b></p> <p><b>High Production Color and B&amp;W Copy and Scan-to-File</b></p> <ul style="list-style-type: none"> <li>• Scan to File</li> <li>• Scan to Email</li> <li>• Copy to KIP</li> <li>• Copy to 2 Inkjets (HP / Canon / Epson)</li> <li>• Save Unlimited Image Quality Filters</li> <li>• Custom Print Quality Filters</li> <li>• Full Image Editor with Save As, Scale to Size, Deskew and Crop</li> <li>• Preview Image Adjustments</li> <li>• Black and White Point Selection</li> <li>• Adjust Scan/Copy Speed</li> <li>• Spot Color Replacement</li> <li>• File-to-Print Graphics RIP with Paneling, Nesting, and Step and Repeat</li> <li>• Job Editor to Combine Collated Sets from Hard Copy Originals and Digital Files</li> <li>• Forward and Reverse Collate</li> </ul> <p><b>FULL FEATURED</b></p>
---	---	---

# SYSTEM SOFTWARE **K**

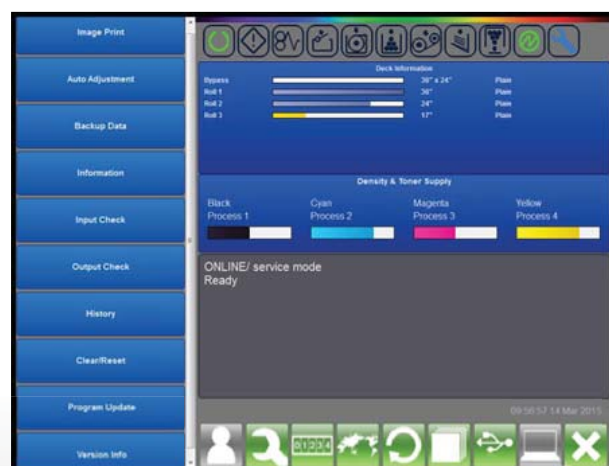
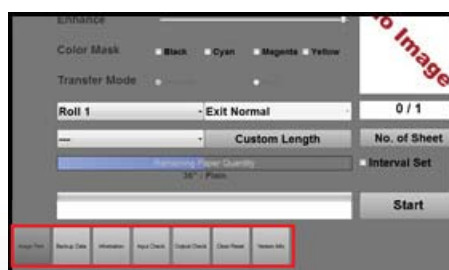
## Print Management Solutions

# KIP Touchscreen Technical Interface

The KIP Touchscreen Technical Interface is a comprehensive program for the control of KIP Systems, Installation & Technical Support.

The touch intuitive and versatile interface includes mode tiling which simplifies the technical experience and management of the KIP System.

- Integrated with KIP Color plus Black & White Systems
- Manage and Modify Printer Functions and Settings
- Review Printer Status and Operational History

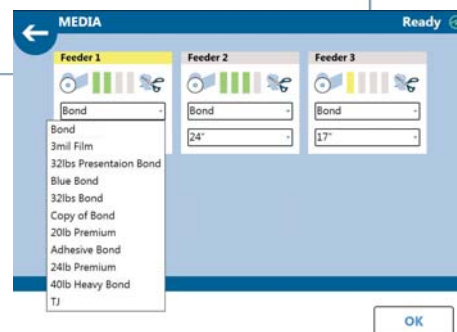
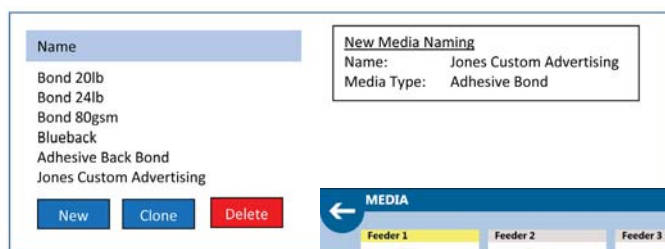


## Print Management Solutions

# KIP Custom Media Manager

The KIP Custom Media Manager is a graphic user interface that allows the operator to identify and customize names to a wide range of media types and the KIP System's specifications.

- Integrated with KIP Color plus Black & White Systems
- Automatically Adjust Systems Parameters
- Descriptive Media Categories



**USA:** Phone: (800) 252-6793 | Email: [info@kip.com](mailto:info@kip.com) **CANADA:** Phone: (800) 653-7552 | Email: [info@kipcanada.com](mailto:info@kipcanada.com)

KIP is a registered trademark of the KIP Group. All other product names mentioned herein are trademarks of their respective companies. All product features and specifications are subject to change without notice. Complete product specifications are available upon request. © 2015